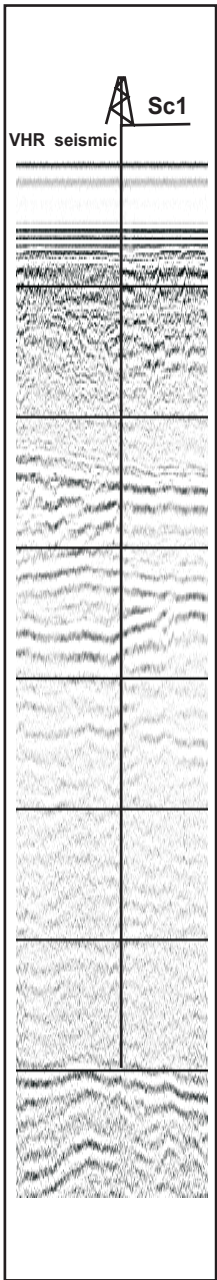
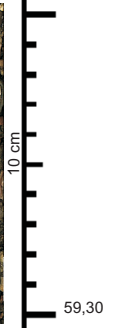
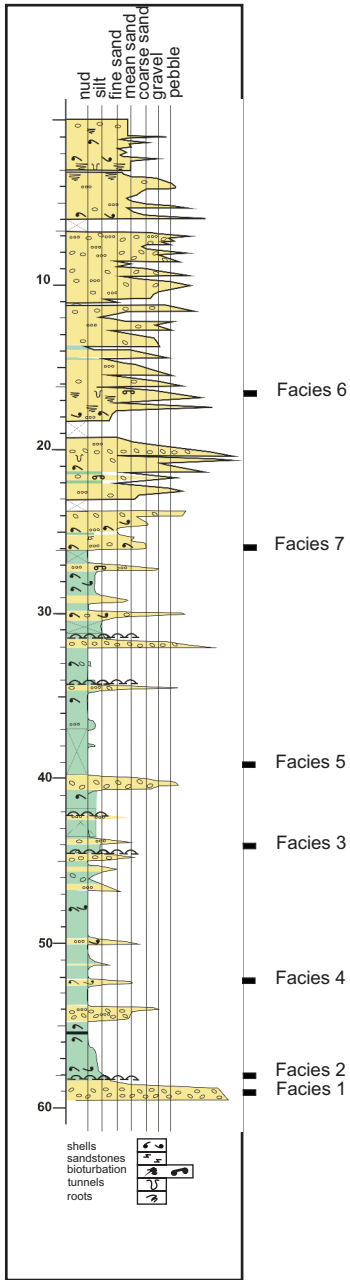


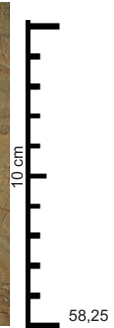
Seismic section



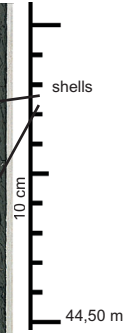
Log Lithologic



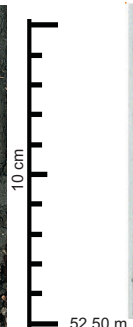
Facies 1 - Non fossiliferous gravel/pebbles. Rounded to angular pebbles with a sandy matrix.



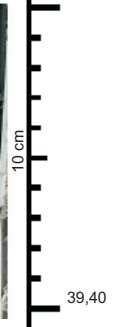
Facies 2 - Laminated mud with oxydised levels of yellow to pink tints.



Facies 3 - Muddy silt with brackish water fauna. Occurrence of foraminifera, calcareous coccoliths and dinoflagellata tests.



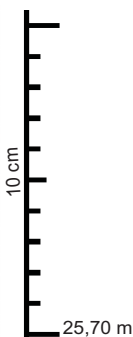
Facies 4 - Shelly beds of disarticulated bivalves, intercalated between muddy-silts of facies 1.



Facies 5 - Non fossiliferous and mud-supported gravel/pebbles.



Facies 6 - Gravel/pebble levels interbedded with fine to medium sands with sub-aerial fossil traces. Fe-stained pebbles (white arrow), roots and tunnels (black arrow) are indicative of oxydised conditions.



Facies 7 - Shelly gravels and sands.

Facies 6

Facies 7

Facies 5

Facies 3

Facies 4

Facies 2

Facies 1

52,50 m

39,40

16,95

25,70 m

59,30

58,25

44,50 m